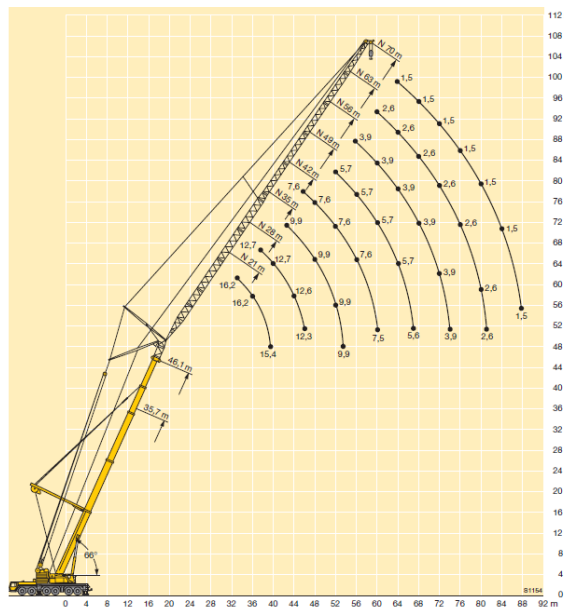


Used cranes trading company.

Liebherr LTM 1300-6.1

year	2007
serial n°	071 177
chassis	61.000 km
chassis engine	D9508 TI-E A5, 450 kW
drive	12x8x10
tyres	16R25, 70 %
crane	11.400 working hours
crane engine	D 924 TI-E A4
boom	TAN, 60 m + 70 m fly jib + TY
winches	2
counterweight	112,5 t
hook blocks	71 t, 31,2 t, ball hook



Information:

The crane had a previous fire damage in the engine compartment. We repaired the crane in our German workshop.

In addition, we overhauled the following components: slewing ring, chassis engine, gearbox, luffing cylinders, telescoping cylinder, and main boom complete overhauling. The crane is in top condition.

LTM 1300-6.1 data

Tel: +49 6252 9977 0

Bank: Deutsche Bank
SWIFT: DEUT DE DB 509
IBAN : DE14 5097 0024 0038 6060 00

Internet: www.k-kran.de
E-mail: info@k-kran.de

VAT No.: DE 111643633

Managing director:
 Andreas Köhler